

LED coolLED Fixture Stick

LED Fixture

Description

Envirobrite's® coolLED™ stick provides excellent lighting performance, significant energy and maintenance savings. The coolLED™ stick is an innovative futuristic approach for enhancing lighting performance and reducing energy costs. The Aluminum low profile extrusion disperses heat evenly for maximum LED durability. The coolLED stick offers zero ultraviolet, infrared radiation or presence of mercury, giving the LED a significant advancement to lighting.

Application

The coolLED™ fixture stick is an ideal solution for reach in cooler, marketing image display light boxes, under cabinet task lighting, retail showcases, vending machines and freezer applications. The LED coolLED™ Stick has multiple lumen packages allowing the right fixture to match the specified application.

Design

The Envirobrite® coolLED™ stick's compact design, lightweight aluminum and quick lock mounting clips were designed by our expert in-house lighting engineers for ideal photometry and trouble-free installation. Every Envirobrite® coolLED stick fixture, is UL Listed and NSF certified. Each Envirobrite® LED fixture maximizes the latest technology lumen output per foot, CRI and color temperature while operating on minimal numbers of system watts.



Primary Features & Benefits

- Proudly Assembled in the USA
- ZERO Lead or Mercury content - ROHS compliant
- Service life – 50,000 hours
- Dimmable with driver upgrade
- Motion Sensor compatible
- LED boards and drivers have five year warranty
- -20 degrees C start up temperature
- Aluminum extrusion housing and baked on enamel finish generate a rust free approach to less maintenance and lasting appeal
- UL Listed, FCC compliant and NSF certified
- Greater than 80 CRI
- UL class Z output driven
- Instant on/instant restrike
- Custom lengths available
- Continuous wiring locations at both ends
- Clear or frosted lens option (wide and narrow distribution)
- Up to 66.2 LPW performance
- Universal Voltage 120-277

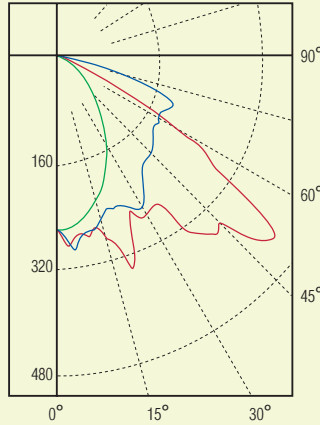
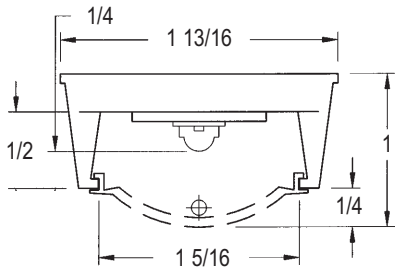
Quick, Safe and Labor Efficient Installation

- Designed for simple cost effective installation
- Flexible connectors for numerous applications
- Quick lock mounting clips included
- 12" pigtail included
- 100% aluminum - lightweight, safe and easy installation
- LED boards accessible without tools





Fixture Dimensions



0° — Candela Plot
45° — coolLED
90° —

Zonal Lumen Summary

Zone	Lumens	Fixture
0-30	212	24.5
0-40	344	39.8
0-60	689	79.7
0-90	859	99.9

FLD2404CT41CLW used for test

Luminaire Spacing Criterion

0 deg - 0.90 90 deg - 2.0
Call factory for full photometric report

Light Output Data

Part #	Average Life	Lumen Output Per Foot	CRI	Color Temperature (K)	Wattage
S2	50,000 Hours	197	>80	2700K	5.1
S2	50,000 Hours	197	>80	3500K	5.1
S2	50,000 Hours	197	>80	4100K	5.1
S2	50,000 Hours	197	>80	5700K	5.1
S3	50,000 Hours	440	>80	2700K	10.3
S3	50,000 Hours	483	>80	3500K	10.3
S3	50,000 Hours	483	>80	4100K	10.3
S3	50,000 Hours	536	>80	5700K	10.3
S4	50,000 Hours	216	>80	3500K	3.7
S4	50,000 Hours	216	>80	4100K	3.7
S4	50,000 Hours	235	>80	5700K	3.7

* Wattage shown is for the LED board. Total system wattage will be 10-15% higher due to power supply losses

Ordering Information

Sample number: **FLD2404CT41CLW**

FIXTURE

TYPE	SERIES TYPE	LED STRIP LENGTH	LED LAMP COLOR TEMP	LED LENS OPTION	LED MOUNTING CLIP HEIGHT	LED PIGTAIL LENGTH
○ FLD2=Generation 2	○ 2=200 Series	○ 04=4 Foot long	○ CT35=3500 Kelvin	○ CLW=Clear Wide Distribution	○ .125 GEN 1 OR 2	○ 12"
	○ 3=300 Series	○ 05=5 Foot long	○ CT41=4100 Kelvin	○ CLN=Clear Narrow Distribution	○ .325 GEN 1 OR 2	○ 60"
	○ 4=400 Series	○ 06=6 Foot long	○ CT57=5700 Kelvin		○ .425 GEN 1 ONLY	