

FH5 BIAX ENCLOSED HIGH BAY 4,5, & 6 LAMP

Description

Fluorescent High-Bay systems have become the number one cost-effective option for replacing the aging technology of metal halide and high-pressure sodium HID lamps. The Envirobrite® Biax multi-lamp enclosed FH5 Fluorescent High-Bay systems have made retrofitting HID lamps an option for any facility's enhancements. Aluminum body fixtures have long been a favored material for their thermal properties and ability to illuminate and operate efficiently in high temperature environments. Added benefits of instant start ups, premium color rendition, comparable lumens per watt, and reduced glare have further justified this technology shift.

Application

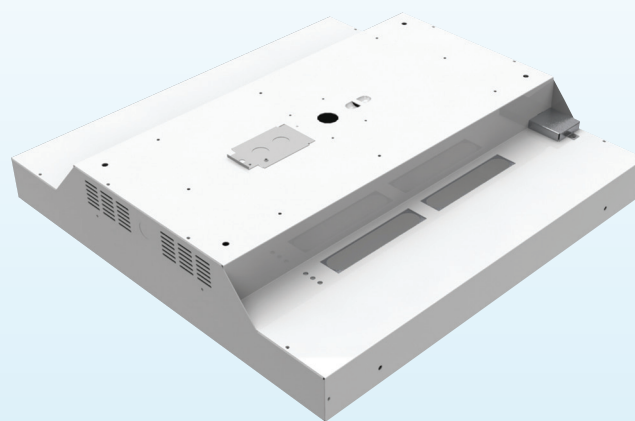
Significant advancement in fluorescent lamps, ballasts, and fixture efficiencies and the addition of rebates have made fluorescent lighting the most cost-effective choice for any application creating excellent return on investment.

Design

Envirobrite® aluminum reflectors and Enclosed Body FH5 Biax fixtures are designed by our expert in-house lighting engineers for ideal photometry and trouble-free installation. Every Envirobrite® fixture is designed to meet UL 1570 specifications for safety. Each Envirobrite® FH5 fixture maximizes 'capture efficiency' – the amount of lumens generated by the lamp that the reflector actually controls. This is a critical element in the Envirobrite® Fluorescent High-Bay fixture design allowing the fixture to control the light and direct it to a specified area.

Primary Features & Benefits

- Proudly Designed and Made in the USA
- UL Listed
- Fixture dimension - 2x2
- Utility rebate qualified throughout the U.S.
- Multiple lens types available
- Optional motion sensor and photo-cell available
- 28w, 40w & 55w lamp options
- Significant reduction in energy consumption
- All aluminum construction is rust-free and low heat
- Riveted construction for added durability
- Universal Voltage 120-277 / 347-480 capable
- Multi-facet optical design for maximum efficiency
- Qualifies for maximum \$.60 square foot EPACK tax deduction
- Up Light version available



*Shown With Biax Uplight

Quick, Safe, and Labor Efficient Installation

- 100% aluminum for a lightweight, safe and easy installation
- Streamlined packaging for easy job site material management
- Snap-in lamp holders won't fall out during overhead installation

LIMITED PRODUCT WARRANTY

Energy Planning Associates warrants for a period of 5 years from the date of purchase that all Envirobrite® fixtures will be free of defects from manufacturing and workmanship. This warranty excludes damage of any kind resulting from improper installation, misuse, abuse, accidents, or natural disasters. Energy Planning will repair, or at its option, replace the defective product and only when the product is properly handled, installed, and maintained.



highfive





(4) 28 watt SS biax with two two light QHE DL ballasts = 110 watts

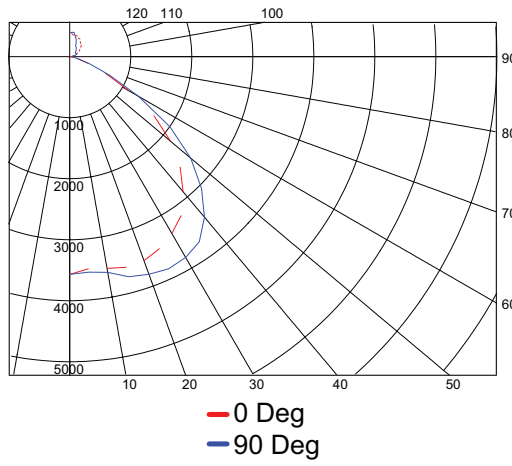


(5) 28 watt SS biax with a two light and a three QHE DL ballast = 138 watts



(6) 28 watt SS biax with two three light QHE DL ballasts = 166 watts

*Ballast is QHE#x40DL/UNV ISN-SC, lamp is FT40/28WSS



ZONAL LUMEN SUMMARY			
Zone	Lumens	% Lamp	% Luminaire
0 - 30	3062	21.9	28.2
0 - 40	5203	37.2	47.9
0 - 60	9007	64.3	82.9
0 - 90	9953	71.1	91.6
0 - 180	10864	77.6	100.0

FH52205TB55EUVMTM13H12HL12P2A
 Total Luminaire Optical Efficiency = 77.6%
 *specs taken using 95% Miro4 Uplight Reflector
 Lumens/Lamp 2800 5 Lamps

Luminaire Spacing Criterion
 0 deg - 1.38 | 90 deg - 1.54
 Call factory for full photometric report

Ordering Information

Sample number: **FH52204TB40ENVMVTL22HL12P2A** Indicates most widely used fixture

FH5	22	O4	TB40
FIXTURE	DIMENSION	LAMPS	LAMP TYPE
<input type="radio"/> FH5 - Full Body 2x2 Biax Fixture	<input type="radio"/> 22 = 2x2	<input type="radio"/> O4 = 4 Lamp <input type="radio"/> O5 = 5 lamp <input type="radio"/> O6 = 6 Lamp <input type="radio"/> O9 = 9 lamp	<input type="radio"/> TB28 = Biax 28 watt <input type="radio"/> TB40 = Biax 40 watt <input type="radio"/> TB55 = Biax 55 watt

EN	VMVT	L22H	L12P2A
REFLECTOR	VOLTAGE	Biax Ballast Configurations	LENS
<input type="radio"/> EN = 95% Miro4 Enhanced <input type="radio"/> EU = 95% Miro4 Enhanced uplight	<input type="radio"/> VMVT = 120/277 <input type="radio"/> VHVT = 347/480	<input type="radio"/> L22H = (2) 2 lamp Biax Ballast <input type="radio"/> M13H12H = (1) 3 lamp & (1) 2 lamp Biax Ballast <input type="radio"/> L32H = (3) 2 lamp Biax ballast <input type="radio"/> L23H = (2) 3 lamp Biax ballast <input type="radio"/> L33H = (3) 3 lamp Biax ballast	<input type="radio"/> L12CSA = .125 Clear smooth acrylic <input type="radio"/> L12CSP = .125 clear smooth polycarbonate <input type="radio"/> L12P2A = .125 Pattern 12 acrylic

OPTIONS		
NF1	D10U1N	CMLA1CQSA
MOUNTING	CORD	MOTION SENSOR
<input type="radio"/> NF1 = Pendant Mount Kit <input type="radio"/> NF2 = Pendant Mount Kit (no hub) <input type="radio"/> NF9 = Mounting Hook	<input type="radio"/> D10A1N = 10' attached, no plug <input type="radio"/> D10A1P = 10' attached, with plug <input type="radio"/> D10A1T = 10' attached, with twist lock plug <input type="radio"/> D10U1N = 10' unattached, no plug <input type="radio"/> D10U1P = 10' unattached, with plug <input type="radio"/> D10U1T = 10' unattached, with twist lock plug	<input type="radio"/> CMSN1AQSA = Aisle way all lamp control <input type="radio"/> CMSN1HQSA = 360 highbay all lamp control <input type="radio"/> CMSN1HQIO = 360 highbay inboard/outboard lamp control <input type="radio"/> CMSN1AQIO = Aisle way inboard/outboard lamp control

* Contact the factory for additional adders available including lamps and ballast combination.