

envirobrite

ENERGY PLANNING ASSOCIATES

FST INDUSTRIAL STRIP FIXTURES

4' & 8' Industrial Strip Fixtures

Description

Fluorescent High-Bay systems have made retrofitting HID lamps the accepted norm for any facilities enhancements. Aluminum body fixtures have long been a favored material for their thermal properties and ability to illuminate and operate efficiently in high temperature environments. Envirobrite's® FST Industrial Strip fixtures are made from 4' and 8' die formed aluminum housings with a variety of reflectors and lamp configurations. The result is substantial energy savings, improved lighting with excellent returns on investments. All Envirobrite® strip fixtures have four different specialized reflector material options and two up-light material options. In conjunction with numerous ballast and lamp configurations our FST fixtures can easily produce ideal IES recommended light levels with minimized energy consumption. Envirobrite® products will continue to provide consistent fixture performance and repeat annual energy savings for up to 25 years.

Application

Since 1994, Envirobrite® Industrial Strip fixtures have been a preferred alternative to older T12 Strip fixtures and an excellent alternative to energy guzzling HID fixtures. These fixtures are recognized worldwide as the industry leading option for their functionality to push light directly to the work plane. Its ideal optics, universal fit and optional wire guards make this fixture an excellent upgrade for any industrial and commercial location.

Design

Envirobrite® FST Industrial Strips are designed by our expert in house lighting engineers for ideal photometry and trouble-free installation. Every Envirobrite® fixture is designed to meet UL 1570 specifications for safety. Integral to ideal fixture functionality is the combination of our manufactured reflectors. Envirobrite® reflectors are fabricated with Energy Planning Associates custom-made multi-stage progressive roll forming machinery. Our unique high speed equipment consistently produces multi-faceted linear fluorescent reflectors within precise quality tolerance. Our process enables us to add additional facets for superior reflector performance significantly reducing production cost and improving lead times. Our rigid, light weight bracketing systems are produced with custom designed stamping dies and are very easy to install.

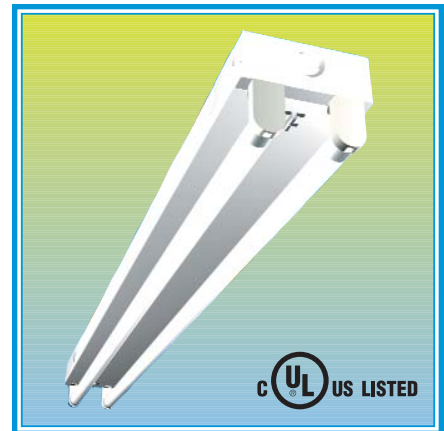
Primary Features & Benefits

- Proudly Designed, Made and Assembled in the USA
- UL Listed
- Utility rebate friendly throughout the U.S.
- Significantly improved lumen maintenance
- Dimmable ballast option
- Individual or continuous row mounting options – tandem wiring
- Available in 4' and 8' configurations with 1 through 6 lamp options available
- Considerable reduction in energy costs
- Significant reduction in energy and maintenance costs
- Qualifies for maximum \$.60 square foot EPACT tax deduction
- Multi-facet optical design for maximum performance
- Universal Voltage 120-277 / 347-480 capable
- Optional motion / occupancy sensing and photo-cell technology for further savings

Quick, Safe and Labor Efficient Installation

- Quarter turn reflectors for easy installation
- Snap-in lamp holders won't fall out during overhead installation
- Toolless ballast access for simple maintenance
- Streamlined packaging for easy job site material management

For added efficiency include high quality T5 or T8 lamps. Adding an Envirobrite® approved motion sensor system to your lighting upgrade project will further enhance energy savings and create an even faster payback.

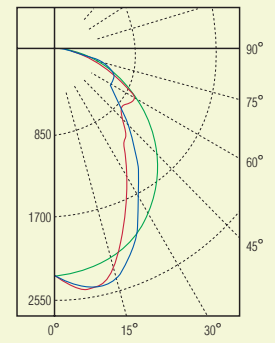


optimize



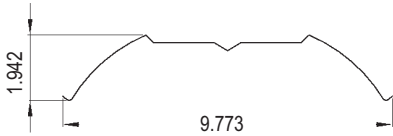
Reflector Dimensions

1000 Series Reflector

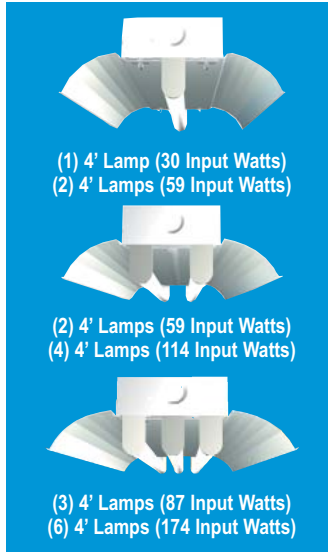
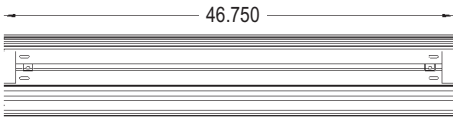


All fixture wattages shown include standard electronic ballast and F32T8 lamps.

Side View



Top View



(1) 4' Lamp (30 Input Watts)
(2) 4' Lamps (59 Input Watts)

(2) 4' Lamps (59 Input Watts)
(4) 4' Lamps (114 Input Watts)

(3) 4' Lamps (87 Input Watts)
(6) 4' Lamps (174 Input Watts)

0° — Candela Plot
45° — 2 Lamp T8
90° —

Zonal Lumen Summary

Zone	Lumens	% Lamp	Fixture
0-30	1810	30.7	31.5
0-40	2797	47.4	48.6
0-60	4527	76.7	78.7
0-90	5747	97.4	99.9

FST1402T832ENVMVTL12H used for test

Total Luminaire Optical Efficiency = **97.5%**

Luminaire Spacing Criterion

0 deg - **1.3** 90 deg - **1.0**

Call factory for full photometric report

Ordering Information

Sample number: **FST1404T554ENVMVTL14H**

FIXTURE

TYPE	DIMENSION	LAMPS	LAMP TYPE	REFLECTOR	VOLTAGE
<input type="radio"/> FST=Industrial Strip	<input type="radio"/> 14=1x4	<input type="radio"/> 01=1 Lamp <input type="radio"/> 02=2 Lamp	<input type="radio"/> T832=32W	<input type="radio"/> EN=95% MIRO 4 Enhanced	<input type="radio"/> WL=91% White Shallow
	<input type="radio"/> 18=1x8	<input type="radio"/> 03=3 Lamp <input type="radio"/> 04=4 Lamp	<input type="radio"/> T554=54W	<input type="radio"/> EU=95% MIRO 4 Enhanced Uplight	<input type="radio"/> AN=87% Anodized
		<input type="radio"/> 06=6 Lamp <input type="radio"/> 08=8 Lamp		<input type="radio"/> EL=95% MIRO 4 Enhanced Shallow	<input type="radio"/> AU=87% Specular Uplight
				<input type="radio"/> WN=91% White	<input type="radio"/> AL=87% Anodized Shallow
				<input type="radio"/> WU=91% WhiteUplight	<input type="radio"/> WA=Ballast Cover Only

BALLAST TYPE	BALLAST CONFIGURATION	NO. OF BALLASTS	NO. OF LAMPS	BALLAST FACTOR
<input type="radio"/> IS=Instant Start	<input type="radio"/> L=Single	<input type="radio"/> 1=1 Ballast	<input type="radio"/> 1=1 Lamp <input type="radio"/> 2=2 Lamp	<input type="radio"/> L=Low
<input type="radio"/> PS=Programmed Start	<input type="radio"/> M=Multi	<input type="radio"/> 2=2 Ballasts	<input type="radio"/> 3=3 Lamp <input type="radio"/> 4=4 Lamp	<input type="radio"/> S=Standard
		<input type="radio"/> 3=3 Ballasts	<input type="radio"/> 6=6 Lamp <input type="radio"/> 8=8 Lamp	<input type="radio"/> H=High
		<input type="radio"/> 4=4 Ballasts		

OPTIONS

MOUNTING OPTIONS	CORD - Optional				WIRE CAGE		
	CORD	ATTACHED/UN	SPECIALTY	PLUG			
<input type="radio"/> NF1=Pendant Mounting Kit	<input type="radio"/> NG3=10' Gripple Loop	<input type="radio"/> D06=6' Cord	<input type="radio"/> U=Unattached	<input type="radio"/> 1=Cold Temperature	<input type="radio"/> N=No Plug	<input type="radio"/> W1=11 Guage Wire Cage	<input type="radio"/> P=Painted
<input type="radio"/> NF2=Pendant Mounting Kit No Hub	<input type="radio"/> NG4=10' Gripple Loop w/Tog	<input type="radio"/> D10=10' Cord	<input type="radio"/> S=Attached Side	<input type="radio"/> 0=None	<input type="radio"/> T=Twist Lock Plug	<input type="radio"/> W4=14 Guage Wire Cage	
<input type="radio"/> NF9=Mounting Hook	<input type="radio"/> NG5=15' Gripple Loop	<input type="radio"/> D12=12' Cord			<input type="radio"/> P=Standard Plug		
<input type="radio"/> NF5=V/Clip	<input type="radio"/> NG6=5' Gripple Loop	<input type="radio"/> D15=15' Cord					
	<input type="radio"/> NG7=5' Gripple Loop w/Tog	<input type="radio"/> D20=20' Cord					
		<input type="radio"/> D25=25' Cord					

EMERGENCY BALLAST	MOTION SENSOR - Optional			
	CONTROL TYPE	POWER FEED	APPLICATION	CONFIGURATION
<input type="radio"/> EII=Iota Pre-wired	<input type="radio"/> CMSN=Motion Sensor	<input type="radio"/> 1=Single Pole	<input type="radio"/> A=Aisle 10 Degree	<input type="radio"/> QIO=Sensor Inboard/Outboard
	<input type="radio"/> CMPU=Motion Sensor with Photcell Facing Up	<input type="radio"/> 2=Two Pole	<input type="radio"/> H=High Bay 360 Degree	<input type="radio"/> QSA=Sensor All
	<input type="radio"/> CMPD=Motion Sensor with Photcell Facing Down			
	<input type="radio"/> CMLH=Motion Sensor with Low Temp/High Humidity			
	<input type="radio"/> CPWO=Prewire Only			
	<input type="radio"/> CLPD=Low Temp/High Humidity			