

Dailite™ ADVANCED TROFFER RETROFIT KIT T5 2x2 & 2x4

Description

Envirobrite® Dailite™ Advanced troffer retrofit kits are an excellent alternative to standard retrofit designs. The aesthetics and efficiencies of 87% or better will significantly enhance and rejuvenate existing lensed and parabolic troffer fixtures. Dailite™ was designed to open up the room and distribute light spaciouly along office walls and directly to the work plane.

Application

Many of today's work surroundings command illuminating perfection especially when working with computers and other media components. The Dailite™ fixture is ideally suited for schools, restaurant, hospitals, offices and other commercial work and retail environments. The Dailite™ inventive design will ensure a contemporary look to any environment.

Design

Ready to Install was imperative when Energy Planning Associates' Engineers designed the Dailite™ kit. Dailite™ was designed to incorporate tool-less installation, rounded-edge end brackets and easy job site organization. All Envirobrite® Dailite™ kits are made of 100% sustainable aluminum components with 92% white reflectors. Dailite™ kits are offered in 1 or 2 lamp T5 configurations. An optional enhanced white reflector can be used which will increase Dailite's efficiency to 92%.

Primary Features & Benefits

- Proudly Designed and Made in the USA
- Meets UL1598B specifications
- Spacing criteria is 1.2 at zero and 1.3 at ninety degrees - allowing for flexible grid configurations
- Utility rebate qualified throughout the U.S.
- Qualifies for maximum \$.60 square foot EPACT tax deduction
- Matte White material
- Air return version available
- Rounded-edge bracketing system
- Build to order 1x4 available

Quick, Safe, and Labor Efficient Installation

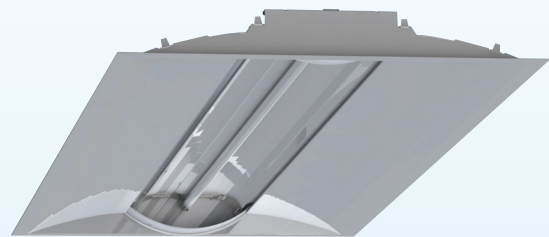
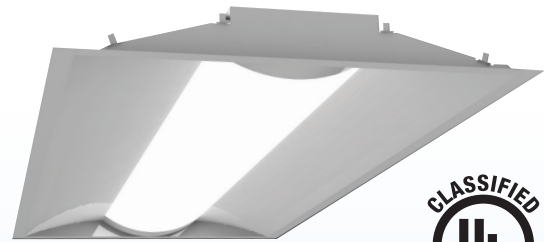
- Tool-less Ready-to-Install system – no fasteners required
- Fits in troffer bodies with depths of 3" or more
- 5 pack 2x4; 10 pack 2x2
- Tool-less ballast access for simple maintenance
- Streamlined packaging for easy job site material management
- Snap-in lamp holders won't fall out during overhead installation

LIMITED PRODUCT WARRANTY

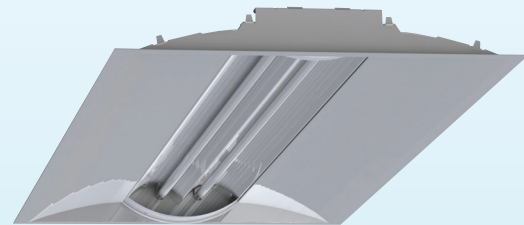
Energy Planning Associates warrants for a period of 5 years from the date of purchase that all Envirobrite® fixtures will be free of defects from manufacturing and workmanship. This warranty excludes damage of any kind resulting from improper installation, misuse, abuse, accidents, or natural disasters. Energy Planning will repair, or at its option, replace the defective product and only when the product is properly handled, installed, and maintained.



riteFIT



Dailite T5 1L With Lens Removed



Dailite T5 2L With Lens Removed

Standard 2x4 Kit includes

- (1 qty) aluminum reflector - 92% White
- (2 qty) aluminum reflector brackets
- (2 or 4 qty) Unshunted high quality chemical resistant thermoplastic body UL approved lamp holders
- (1 qty) Flexible lens diffuser
- (2 qty) lens straps
- (4) tek screws



Office Retrofit Light Level Comparison

10' x 16' Ceiling Height = 9' Workplane - 30"

OLD

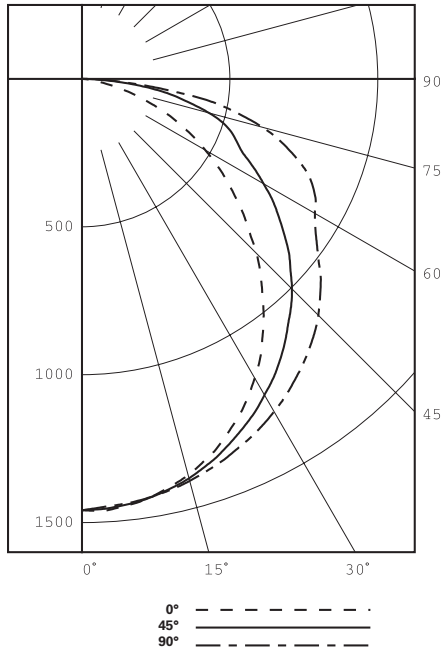
3 Lamp Parabolic T8 - BF .88, system watts - 87

Avg. footcandles = 73

NEW

1 Lamp Dailite T5 - BF 1.15 - System watts - 32

Avg. footcandles = 36



RDL2402T528WNLUS used for test
Total Luminaire Optical Efficiency = 86.9%

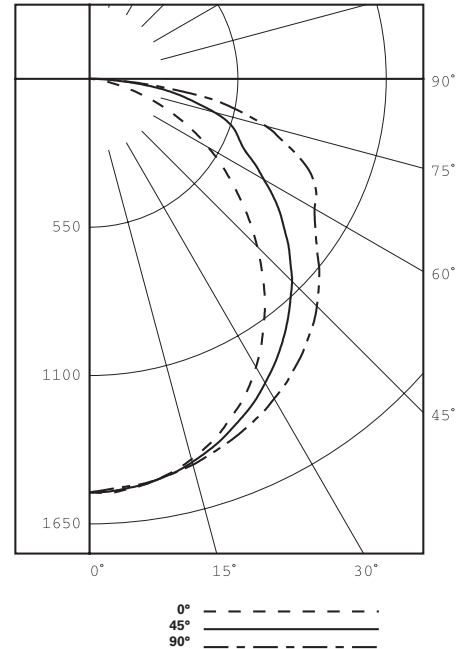
ZONAL LUMEN SUMMARY

Zone	Lumens	% Lamp	% Luminaire
0 - 30	1130	21.7	25.0
0 - 40	1858	35.7	41.1
0 - 60	3339	64.2	73.9
0 - 90	4518	86.9	100.0

Luminaire Spacing Criterion

0 deg - 1.20 | 90 deg - 1.33

Call factory for full photometric report



RDL2402T528EWLUS used for test
Total Luminaire Optical Efficiency = 92.1%

ZONAL LUMEN SUMMARY

Zone	Lumens	% Lamp	% Luminaire
0 - 30	1191	22.9	24.9
0 - 40	1959	37.7	40.9
0 - 60	3524	67.8	73.6
0 - 90	4790	92.1	100.0

Luminaire Spacing Criterion

0 deg - 1.20 | 90 deg - 1.34

Call factory for full photometric report

Office Retrofit Savings Summary

3LT8 Parabolic Troffer

Existing Wattage 89W with NBF Ballast

741 series lamp at life is producing 2800 lumens

3 Lamps in 65% efficient fixture: 4804 lumens

50 F.C.

3800 hours of operation at \$.12 Utility Rate = \$40.58/year

1LT5 Dailite Kit

26W Lamp at 1.15 BF is 33W

841 series lamp producing 2900 Lumens

87% efficient fixture in single lamp configuration: 2898 usable lumens

35 F.C.

3800 hours of operation at \$.12 Utility Rate = \$13.22

Ordering Information

Sample number: **RDL2402T528WNLUSPK05**

Indicates most widely used kit

RDL	24	02	T528	WN	LUS	PK05
TYPE	DIMENSION	LAMPS	LAMP TYPE	REFLECTOR	LAMPHOLDER TYPE	Kit Pack Quantity
○ RDL - Retrofit Dailite Troffer Kit	○ 24 = 2x4 ○ 22 = 2x2	○ 01 = 1 Lamp ○ 02 = 2 Lamp	○ T554 = 54 watt (4') ○ T528 = 28 watt (4') ○ T514 = 14 watt (2') ○ T524 = 24 watt (2')	○ EW = Enhanced White ○ WN = 92% White	○ LUS = Unshunted short twistlock	○ PK05 = 2x4 5 pack ○ PK10 = 2x2 10 pack

* Contact the factory for additional adders available including lamps and ballast combination.

* Air return option available. Contact factory for ordering information.