

RTR TROFFER REFLECTOR KIT 2 x 4 Troffer Fixture Retrofit Kit

Description

Envirobrite's® RTR troffer kits dramatically enhance existing fixture efficiencies creating substantial energy savings with excellent return on investment. All Envirobrite® kits have four different specialized material options which offer various light distributions with minimal up-front investments. These kits, in conjunction with numerous ballast and lamp configurations, can easily produce ideal IES recommended light levels with minimized energy consumption. Envirobrite® kits will continue to provide consistent fixture performance and repeat annual energy savings for up to 25 years.

Application

Since 1994, millions of 2x4 lensed troffers and 18 cell parabolic louvers have been successfully de-lamped with Envirobrite troffer kits. These kits are recognized worldwide as the industry leading retrofit kit for the majority of all commercial 2x4 fixtures. Its ideal optics, universal fit configuration and flexible stamped bracketing system allows proper fit in office spaces, classrooms, hospitals, and many other commercial locations.

Design

Envirobrite® kits are designed by our expert in house lighting engineers for ideal photometry and trouble-free installation. Every Envirobrite® kit is designed to meet UL 1598B specifications. Integral to ideal kit functionality is the combination of our bracketing system which centers the lamps specifically to the optics of the reflector design. Our rigid, light weight bracketing systems are produced with custom designed stamping dies and are very easy to install. As with all Envirobrite® products Cost-A-Mized solutions are available to meet every customers needs.

Quick, Safe and Labor Efficient Installation

- Unique bracket design UL approved for no wire guard requirement
- Snap-in lamp holders won't fall out during overhead installation
- Streamlined packaging for easy job site material management
- With 1/3 the weight of steel aluminum components permit reduced shipping cost and simpler installation
- Rounded-edged brackets to avoid injury during installation

LIMITED PRODUCT WARRANTY

Energy Planning Associates warrants for a period of 5 years from the date of purchase that all Envirobrite® fixtures will be free of defects from manufacturing and workmanship. This warranty excludes damage of any kind resulting from improper installation, misuse, abuse, accidents, or natural disasters. Energy Planning will repair, or at its option, replace the defective product and only when the product is properly handled, installed, and maintained.

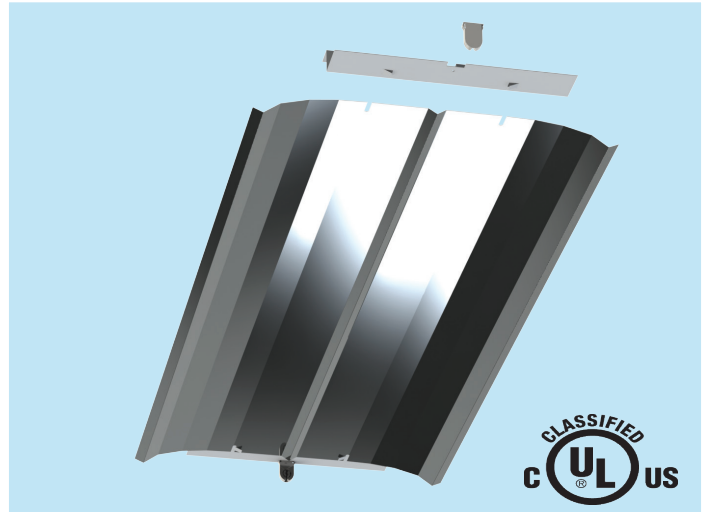
Project Information

Project Name _____

Fixture Number _____

Date _____

Type _____



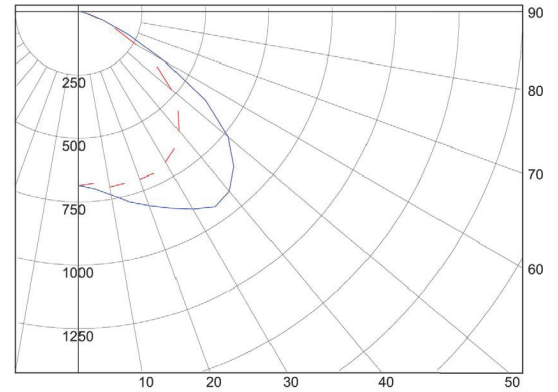
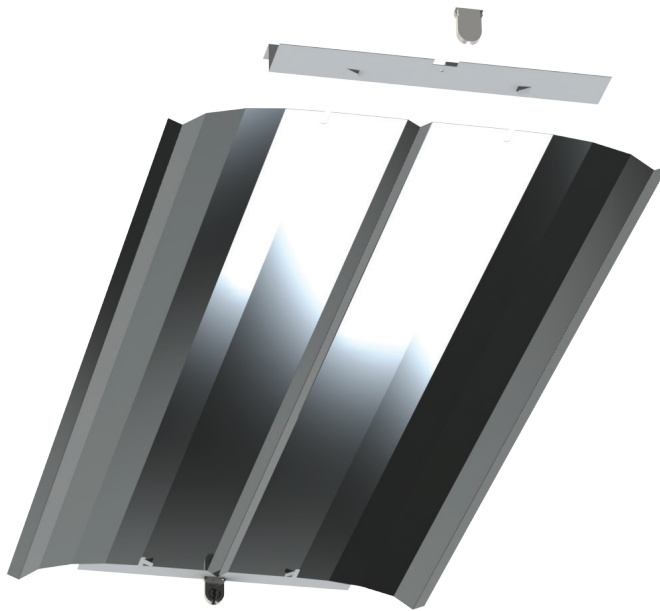
Primary Features and Benefits

- Proudly designed, made and manufactured in the USA
- Utility rebate friendly throughout the USA
- Qualifies for EPACT tax deduction
- Multi-facet optical design for maximum performance
- Significant reduction in maintenance costs
- Superior lighting directly to the work plane
- Aluminum components generate a rust-free approach to less maintenance and lasting appeal

2x4 Kit Includes

- (1) aluminum reflector made from your choice of specified material (95% Enhanced Specular, 93% Micro Matte, 92% White-painted)
- (2) white-painted stamped aluminum brackets
- (2) specified shunted or unshunted high quality chemical resistant thermoplastic body UL approved lamp holders
- (5) tek screws





0° — Candela Plot
 45° — 2 Lamp T8
 90° —

ZONAL LUMEN SUMMARY			
Zone	Lumens	% Lamp	% Luminaire
0 - 30	640.8	22.1	26.6
0 - 40	1142.5	39.4	47.4
0 - 60	2151.7	74.2	89.3
0 - 90	2140.3	83.1	100.0

RTR1401T832ENLSS used for test
 Total Luminaire Optical Efficiency = 83.1%

Luminaire Spacing Criterion
 0 deg - 1.4 90 deg - 1.9
 Call factory for full photometric report

Ordering Information

Sample number: RTR2401T832ENLSS (indicates most widely used kit)

Project Fixture Number: _____

Type	Dimension	Lamps	Lamp Type	Reflector	Lampholder Type
• RTR	• 24 = 2 x 4	• 01 = 1 Lamp	• T832 = 32watt • T554 = 54watt	• EN = 95% Specular Enhanced • MN = 93% Micro Matte • WN = 92% White Aluminum	• LSS = Short Shunted Twist Lock • LUS = Short Unshunted Twist Lock • LUP = Unshunted T5 Plunger

Contact the factory for additional options including lamp and ballast combination

For added efficiency include high quality T5 or T8 lamps with either instant or programmed start ballasts. Adding an Envirobrite® approved motion sensor system to your retrofit project will further enhance energy savings and create an even faster payback.