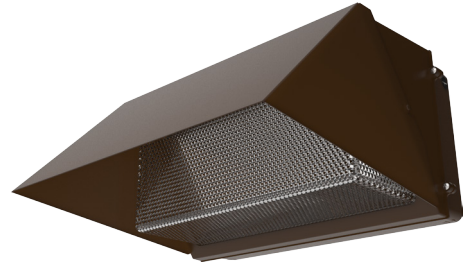


## FWF / LED Wall Pack

The FWF LED Wall Pack is an efficient, energy saving solution for replacing metal halide and high-pressure sodium fixtures. The traditional design is ideal for pathways, building entrances, vehicle ramps, schools, tunnels, stairways and loading docks.



Project Name: \_\_\_\_\_ Type: \_\_\_\_\_

Catalog Number: \_\_\_\_\_ Date: \_\_\_\_\_

## SPECIFICATIONS

### Features

- Replaces up to 400w metal halide fixtures
- Visor included
- Uniform and consistent color
- Excellent thermal design
- Multiple knockouts for mounting convenience
- 50,000 hours L70 rated life

### Construction

- Aluminum die cast housing
- Tempered glass lens
- Bronze powder coat finish
- Rust free

### Electrical

- 120-277V universal voltage driver

### Optics

- Color temperature 5000K with minimum CRI 70

### Warranty

- 5-year limited warranty

### Options

- Consult with your sales representative for additional options

## CERTIFICATIONS



## ORDERING INFORMATION

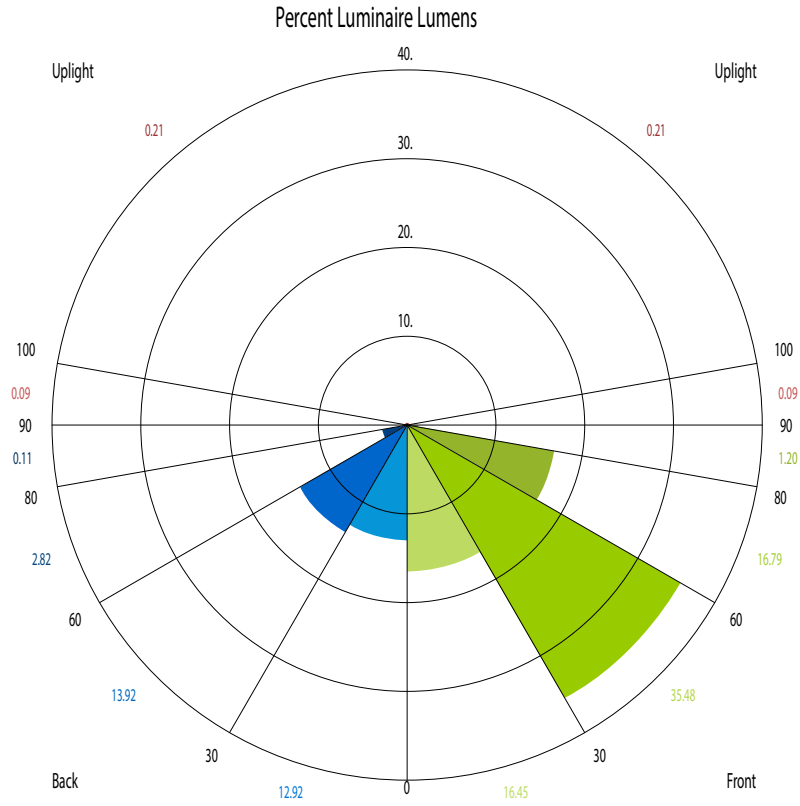
PART NUMBER	POWER CONSUMPTION	LUMENS	LUMENS PER WATT	LENGTH	WIDTH	HEIGHT
FWF8050	80W	6100*	100	17"	9-1/2"	9"

\*This product is DLC listed with the visor installed at a delivered 6,100 lumens. The delivered lumens without the visor installed is 8,000 lumens. The visor is included in the box unattached to the fixture.\*

**FWF / LED Wall Pack**

**PHOTOMETRIC DATA (80 Watt)**

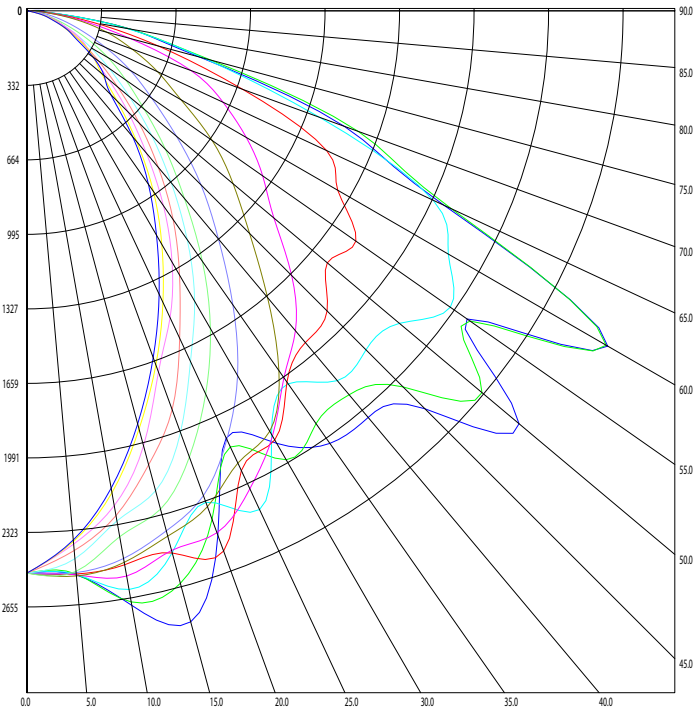
**Luminaire Classification System Plot**



## FWF / LED Wall Pack

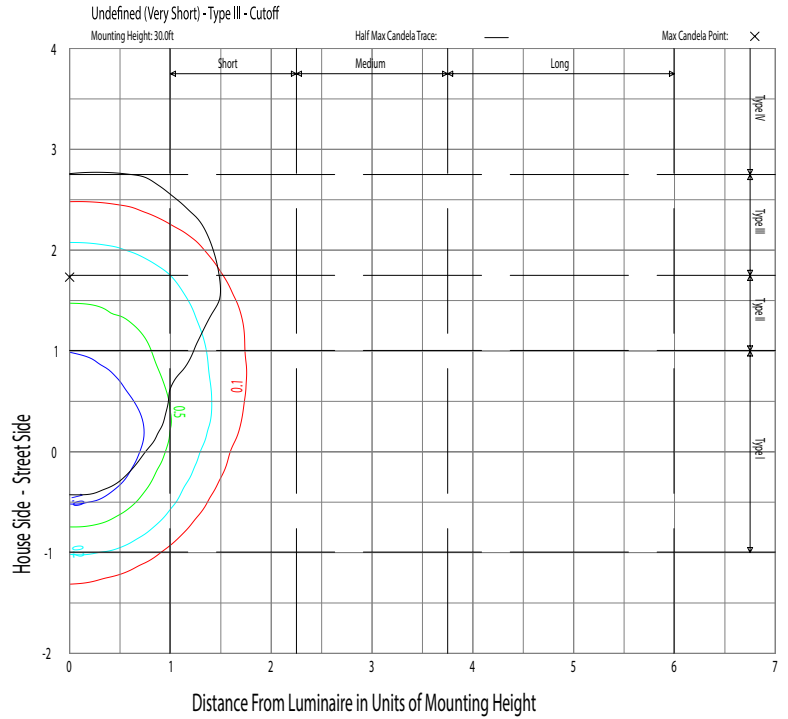
### PHOTOMETRIC DATA (80 Watt)

#### Luminaire Classification System Plot



- 0.0
- 15.0
- 30.0
- 45.0
- 60.0
- 75.0
- 90.0
- 105.0
- 120.0
- 135.0
- 150.0
- 165.0
- 180.0

#### Iso-illuminance Plot



**FWF / LED Wall Pack**

**LUMEN AMBIENT TEMPERATURE COEFFICIENTS**

PART NUMBER	LUMEN AMBIENT TEMPERATURE (LAT) MULTIPLIERS					
	Ambient					
	0°C	10°C	20°C	25°C	30°C	40°C
Lumen Multiplier						
FWF8050	1.02	1.01	1.01	1	0.99	0.99

**PROJECTED LED LUMEN MAINTENANCE**

PART NUMBER	PROJECTED LED LUMEN MAINTENANCE			
	Operating Hours			
	0	25,000	50,000	100,000
Lumen Maintenance Factor				
FWF8050	1.0	0.93	0.88	0.78

**ELECTRICAL LOAD DATA**

PART NUMBER	ELECTRICAL LOAD DATA			
	Electrical Load - Current (Amps)			
	120VAC	208VAC	240VAC	277VAC
FWF8050	0.65	0.38	0.33	0.29

## FWF / LED Wall Pack

### FIXTURE DIMENSIONS

